

SPRING 2016

ANNUAL PARISH MEETING

Thursday April 14th (7.00 pm in the Village Hall)

This year's Annual Parish Meeting is of particular importance, as the Parish Council is faced with considerable costs for the repair/replacement of both the Churchyard wall and the streetlights under its responsibility.

The wall is a financial obligation that the Parish Council cannot avoid and the question is how the work should be financed – a substantial increase in the Parish precept for one year only or financed over anything up to 50 years, with no increase in the precept?

The nine or so street lights owned by the Council present a different question – their age is such that they need replacement and, as some are dangerously situated close to power lines, this racks up the expense.

Both these matters (and others) will be discussed on April 14th and your input as a resident of the village will be important in helping the Parish Council decide whether and how to deal with them. Please see Pages 8 and 9 for further information and book the date in your diary

Coddanham PC
Parish Newsletter

Welcome to the second edition of the Coddanham Parish Newsletter!

We have used this opportunity to feature a number of the village institutions, such as St Mary's Church, the Country Club and the Village Hall.

Over the years, Coddanham has grown in size, the population has changed, some moving in, some moving out and some being born here. So there is a fair chance that many residents will pass by any of these organisations without any real idea of how they originated or even of what they do (apart from the obvious!). There's also the chance that even long-standing residents of the village will learn something new!

Elsewhere inside, you will find details of upcoming events, the background to an important Annual Parish Meeting, an update from our County Councillor and the latest information about what is happening at the Duke's Head. There is also an introduction to a series of occasional articles about what the Parish Council does.

Whatever your longevity as a resident or your particular interests, we hope that you find the contents enjoyable and informative.

As always, local news, written contributions, advertisements and photographs are very welcome. Please send them to Colin Hardy at hardyfamilycoddanham@btinternet.com or leave them with Julia Keeble at the Food Store.

SUFFOLK COUNTY COUNCIL REPORT



Tour of Britain's £4.5 million boost to regional economy

It's been confirmed that Suffolk and Norfolk economies received a bumper windfall of around £4.5 million as a result of hosting stage 7 of the Tour of Britain last September. This was the first time in three years that Suffolk and Norfolk had hosted the Tour, following the hugely successful stage in 2012, in which London Olympic Gold Medallist Bradley Wiggins took centre stage. Areas of the local economy which attracted the most significant expenditure were food and drink, petrol/parking, local travel, shopping, accommodation and merchandise.

Around 86% of spectators on the day were from the East of England, with the remaining 14% visiting from further afield. The Suffolk stage of the route showcased some of the most picturesque Suffolk countryside and attracted around 110,000 spectators. The knock-on effect of events such as these is that people are inspired to get on their bike and give cycling a go for themselves, helping with Suffolk's aspiration to become the most active county in England. Feedback has suggested that around 66% of those who came to watch the Suffolk stage have been inspired to cycle more. Three hours of live TV coverage, along with repeat highlight programmes of the stage were broadcast internationally through 13 TV stations, showcasing the two counties to an estimated global audience of 116,487,600.

Looking ahead to the summer of 2016, it has now been confirmed that the Women's Tour return to Suffolk for the third year, with the grand depart being hosted by Southwold on Wednesday 15 June. The route will then head out through Halesworth, Beccles and Lowestoft before crossing the border into Norfolk.

Forthcoming consultation events will bring focus to need for new A12 link road

Suffolk Chamber of Commerce held two 'business breakfast' consultation events for all local businesses based along the A12 route between Ipswich and Lowestoft to learn more about the impacts that the current state of the route has upon them. The free-to-attend events were managed by the Chamber of Commerce on behalf of Suffolk County Council and East Suffolk Councils.

It is hoped that the consultation will draw together information from local businesses, particularly concerning: the impact that the current state of the A12 has on business; the difference specific improvements might make; the costs incurred relating to unreliable and delayed journey times; the Investment likely to result from improved more reliable access and future employment growth.

Recognised as a key strategic link in East Suffolk, the success of the A12 is essential for continued business growth. Suffolk County Council and East Suffolk Councils have committed £500k to build a strategic business case to Government for funding to improve part of the A12 between Ipswich and Lowestoft. Of course, the need for a new bypass for the villages of Marlesford, Little Glemham, Stratford St Andrew and Farnham was an area of discussion at these events.

This has been commonly referred to as The Four Villages Bypass (4VBP) but after considering the benefits and drawbacks of retaining the current scheme name, the decision has been taken to rename the scheme as **Suffolk's Energy Gateway**, to reflect its national significance.

The County Council will be making the case to the Department for Transport for this scheme to be centrally funded, given the importance of this strategic corridor that links Ipswich to the Suffolk coast, and benefitting from a wide range of businesses involved in the energy sector. It is hoped that Suffolk's Energy Gateway will lead to much needed improvements in transport links, which will be critical in unlocking the full economic potential of the Suffolk Coast, ensuring jobs for local people and the continued prosperity of east Suffolk.

Suffolk Highways to begin work on Ipswich Rail Station's forecourt

Work to improve the forecourt at Ipswich Railway Station is set to provide a safer environment for pedestrians and cyclists, whilst making the station more accessible and giving the best possible first impression of the county town. The project, being undertaken by Suffolk Highways, starts in February and will last for 25 weeks. Key aims are to provide a better balance of accessibility to the station, protecting vulnerable road users, such as pedestrians, cyclists and public transport passengers, and improving the flow of traffic flow, all of which are major issues currently for the station.

Plans include: designated short-stay and drop-off parking for cars, new bus waiting shelters with real-time passenger information located directly outside the station, a sheltered waiting area for taxi customers, a dedicated parking area for motorbikes, more space for pedestrians and cyclists and additional sheltered cycle parking. The forecourt project is anticipated to cost in the region of £1million and will be jointly funded by Suffolk County Council, Abellio Greater Anglia and Ipswich Borough Council. Work is expected to be complete by early July.

Aside from work to the forecourt, Abellio Greater Anglia are undertaking work to redevelop the station building, which will result in a more spacious layout with new retail outlets in the booking hall, improved waiting facilities and customer information.

Matthew Hicks - County Councillor for the Thredling Division

Tel : 01728 628176 Mob : 07824474741 E-mail : matthew.hicks@suffolk.gov.uk

ADVERTISE

IN THIS NEWSLETTER AND THE INTERNET VERSION ON THE PARISH WEBSITE

FOR AS LITTLE AS £12 PER QUARTERLY ISSUE

(DISCOUNTED PRICE FOR LOCAL BUSINESSES).

FOR MORE DETAILS, CONTACT THE PARISH CLERK

See Page 16 for contact information

WOODWARDS OPEN GARDEN



Marion and Richard Kenward are again opening their garden for the National Scheme. It is now ten years since we first opened for charity and, in that time, we have had thousands of visitors from all over the world and raised over £22,000.00 for charities (over £4,000.00 going to Coddensham Church)

The main beneficiaries of the NGS last year were Cancer Care, Macmillan, Marie Curie Hospice - the Carers Trust and Parkinsons UK also received a donation.

Our first open day is Sunday March 27th, from 10am, for our spring bulb display and, for homemade cake aficionados, a good selection provided by the expert makers from the Church.

If you would like a booklet of our other opening times and details of 58 other gardens open for the NGS in Suffolk, please contact Marion or Richard on 760639

Richard Kenward

CODDENHAM OPEN GARDENS AND SCARECROWS 2016

After the success of our 2014 event, which raised several thousand pounds for good causes, preparations continue for this year's OG&S, to be held on Sunday 12th June, from 11:00am to 4:30pm. All profits will be divided between St Mary's Church, Coddenham and the Town 102 Children's Charity.

We should have 13/14 gardens open, and will be holding our traditional Scarecrow Competition, judged (professional commitments permitting) by the great Roy Hudd! Teas and snacks will be available in the village hall and local artisan butchers Palfrey and Hall will be running a BBQ. Our fantastic Village Shop and Country Club will also be open.

We hope to have a 'Gardening Books and Garden Jumble' stall too, so any donations would be gratefully received – contact David or Jane as below. Put the date in your diary and cross your fingers for sunshine!

A couple of our stalwart helpers have had to stand down this year due to ill-health or other commitments, so we could do with some more volunteers. If you feel you could help for a few hours (or even an hour), staffing a stall, helping with teas, signage or car parking, we'd love to hear from you! We also need a qualified First Aider, to be available in the village during garden opening hours.

Events like this don't just happen so, if you'd like to help, or to know more, please contact me as below, or speak to Jane Soanes in the Village Shop.

David McDonnell, Chair, Open Gardens and Scarecrows Working Group

P: 01449 761793,

E: deborah.mcdonnell3@btinternet.com

CODDENHAM VILLAGE HISTORY CLUB

We finished our programme last year on a high note with a visit from the ever popular writer and broadcaster Charlie Haylock taking "An Eccentric Look at Suffolk". The weather that evening was very wild and wet but the audience in the Community Hall was convulsed with laughter.

Previously, we had enjoyed Viv Codd's archive films of local windmills, particularly the reconstruction of Thelnetham mill mainly by the local community. Exact measurements and much skill were needed to get the cap of the mill to fit. In September, we had heard Peter Minter talking about the fascinating work of the Bulmer Brick and Tile company in reconstructing a great variety of brickwork on historic buildings including Hampton Court Palace, Helmingham Hall and St Pancras Station.

We look forward to another year of stimulating talks, which started in February with John Norman, the Chairman of the Ipswich Society. His account of "Ipswich Then and Now" helped to explain how the historic development of Ipswich has resulted in some present problems.

In March Rob Parker will tell us about "Butterflies as Indicators of Climate Change". Rob helped to set up the Recording Transect on Manor Farm when he was the Recorder for Suffolk for Butterfly Conservation. In April Mark Mitchells, will talk on "Oliver Cromwell" and in May, Sheila Wright is telling us about "A Suffolk Village in Wartime".



We have a lot to look forward to - please come and join us!

Brenda Hudson

St Mary's Church

Domesday Book (1086) registered a curious number of churches in Coddensham and Olden. Ranging from ½ to part of three churches and “another church”, 4½ or 5 in all. Possibly these were actually the church lands, since Domesday was for assessing the revenue the Norman regime could claim. Nonetheless, the narrow window in the north wall of the chancel is of the period.

As the churchyard is on a slight eminence, it suggests an earlier, Anglo-Saxon building. There were six substantial landholdings, from 30 to 76 acres each, held before the Conquest by Anglo-Saxons then appropriated by Normans. Communities like this could well have had a church.



In following centuries, repairs must have been needed but not always done. In 1597, it was reported that the chancel was “in great decay in the roof, pavement and glass windows allowing access to beggars who lie in and abuse the church.” Further, the “churchyard is unfenced.”

A Victorian trade directory shows glebe land of around 28 acres, compared with 35½ associated with the churches of 1086. A glebe was part of a clergyman's benefice, providing income in addition to tithes.

There are records of church restoration and remodelling, particularly by the Revd. Ernest Geldart from 1891 to 1893 when the Norman window was revealed and glazed (there may not originally have been glass).

By the 1890s, when Parish Council records began, there was a further question of fencing the churchyard. A “strained iron fence” was placed between the churchyard and the property of Mr Summers.

A wall was repaired in 1897 and again in 1943. By this time, maintenance of the churchyard had been transferred to the Parish Council.

John Pelling

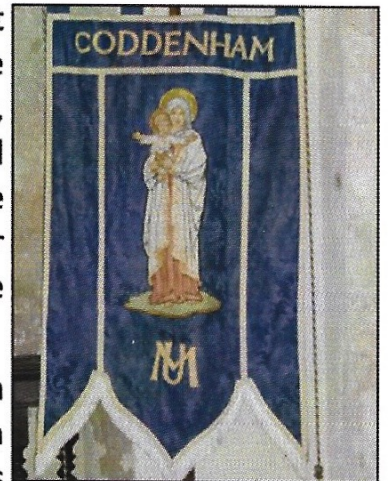
St. Mary's – our Parish Church

There has been a church on the present site since shortly after the Norman Conquest (possibly earlier) and a small window in the chancel wall on the village side has been dated to this period. It is fitting that its stained glass depicts Mary, the mother of Jesus, whom the church is named after. Mary is also remembered if you look up at the beautiful late 15th / early 16th century flushwork that decorates the porch and the upper part of the nave walls.



With immense skill, flints were split to reveal their flat black surfaces, trimmed and set within dressed stone so as to form patterns and inscriptions. The letter M stands for Mary. Other inscriptions in the stonework are IHS (denoting the first three letters of the Greek name for Jesus), and *Orate pro Animae Johannis Frenche et Margarete* (pray for the souls of John and Margaret French). It is well worth going into the churchyard with some binoculars to admire this wonderful craftsmanship.

Mary is also depicted in the east window (shown in the last newsletter) by the letter M in the west window, by a small statue in a niche above the porch door, on the Mother's Union banner, in a late nineteenth century plaster panel on the west wall, and by the existence of a 'lady chapel' (named after 'Our Lady') in the south chancel. This area is well suited to private prayer or for small services, such as the communion service at 10.30 am on the first and third Wednesday of each month.



There are several special services as we approach Easter. On Palm Sunday (20th March) we recall Jesus entering Jerusalem on a donkey before his trial and crucifixion. A short service at St Mary's at 10.00 am includes the distribution of palm crosses recalling the palms that were spread



in front of Jesus as he entered Jerusalem seated on a donkey. We then walk to Hemingstone church (last year with a donkey!) making a couple of stops for songs and readings on the way. On Good Friday, there is a children's workshop at Hemingstone at 9.45 (this year the theme is 'wood') and they join us for a short service in the Coddendam churchyard at midday. Our Easter Sunday communion

service is at 11.00 and the singing will be led by the benefice choir.

The church is open every day, so please feel that you can go in - whether to meditate and pray - to enjoy the tranquillity, or to explore its rich history and architecture.

Ian Galbraith

Coddenham Churchyard Wall

The wall that surrounds the churchyard is in very poor condition. In the last year there have been 2 collapses. The one by the main



gate has been repaired and work on re-building part of the rear wall will commence in the Spring.

It is now apparent that about 15m of the wall alongside the road is in danger of collapse. This ancient flint construction has started to bulge and now overhangs the B1078. This is a retaining wall, as the ground inside the churchyard is 1.5m above the road level.

Valley Farm Annex.

A very big thank you to all our neighbours for their patience and understanding while our building work has been going on. We have appreciated all the kind words, help, and enormous interest our new house has generated.

We hope to be moved in by the time this goes to press and look forward to our new adventure.

Fiona and Gerald Cousens



Professional advice received by the Parish Council recommends shoring up the wall on a temporary basis prior to re-building. The total cost of rebuilding the most badly affected part of the wall and re-pointing the remainder is likely to cost about £70,000.

How to finance these expensive repairs will be discussed at the Annual Parish Meeting in the Village Hall on April 14th, starting at 7.00 pm



**Trusted by
local families**
since 1925

Meredith Greengrass
9 Marriotts Walk
Stowmarket

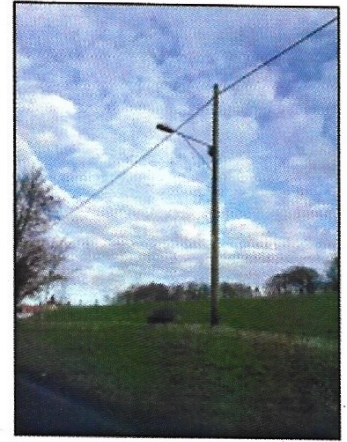
01449 612765



Funeral Services
eastofengland.coop/funerals

Coddenham Street Lights

Renew, Reduce or Remove???



Coddenham Street Lights

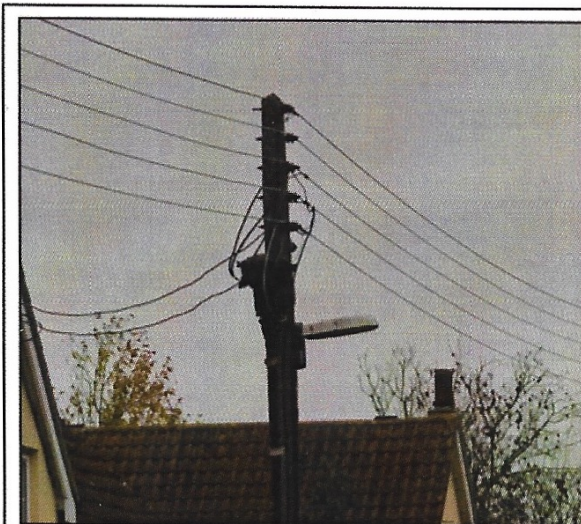
- Parish Council Obsolete
- Parish Council Community Centre Path
- Suffolk County Council

Street Lights are owned by either the Parish Council or the County Council

The lights shown in blue are modern. Those in red are obsolete. (Dusk to dawn, illegal mercury vapour bulbs and some too close to live wires.)



**County Council street light on left and
Community Centre light on right**



It will cost up to £9000 to replace all the Parish Council-owned obsolete lights with new fittings and energy efficient LED lanterns.

Should we Remove, Reduce or Renew ?

Your views are required at the Annual Parish Meeting to be held on April 14th in the Village Hall, starting at 7.00 pm

Coddenham Sports and Community Centre.

A brief history of how recreational and community facilities have developed in Coddenham over the last century.



In 1925, the recreation ground was gifted to "the Children of Coddenham ". It has been maintained by the Parish Council on behalf of the children and older users ever since. Until the early 21st century, the footballers and children had an open tin shed in the corner of the ground for use as a toilet.

A small and notoriously cold village hall was built early in the 20th Century by a Trust and was used until 2002. No food could be prepared there in latter years, as the kitchen did not meet minimal environmental health standards and the Trust could not afford to update the facility.

Discussions started in the mid 1980's about how the village could build a new community centre fit for purpose and improve facilities for users of the recreation ground. Land became available as the field on the opposite side of School Road to the recreation ground was too small for modern commercial agriculture and the owning trust could find no use for it. The then new national lottery meant that money for community projects was now accessible.

Coddenham Sports and Community Centre.

The project starts.....

The first application made by the Parish Council was to the Millennium Fund. It was rejected, mainly because the application was not well enough developed and several other new village halls had been funded through that route. Alternative lottery funding was available through Sport England. The planning and architectural company of West and Partners prepared, free of charge, concept drawings and a model for a community centre. The brief was developed to accommodate traditional village hall facilities including a kitchen capable of function catering.

The sports to be allowed for were based upon those that people who took part in village surveys in the 1990s had requested - bowls, tennis and badminton. Sport England insisted on minimum dimensions for the bowls green, hall and that the tennis courts should be a multi games area in order to consider funding support. It is for this reason that some of the development was larger than would have been the case if funding could have come from a different source.

The Parish Council asked for planning permission to build on the unused and scrub covered field on the east side of School Road. It was only with the intervention of our district councillor that the objections of the planning officers to building outside the village envelope were overcome and permission for "exceptional development for community use only" was granted. Once we met the Sport England Requirements, and had match funding promises in place, a provisional award of almost £0.5 million of lottery money was made to the parish council. Additional grants were also obtained in cash and kind from many sources but this still left a shortfall of £100,000 to build the centre.

A public meeting was held and the old hall was crammed with nearly 80 villagers and, after a vigorous discussion, a majority of over 90% of those attending wanted to proceed with building the new community centre and taking on a loan to cover the funding shortfall - the repayment of which was to be funded from the precept. The Parish Council accepted this mandate and let a design and build contract, then took out the necessary loan from the Public Works Loan Board. In early 2004, the new Community and Sports Centre was operating and was officially opened by HRH the Princess Royal later that year.

Shortly thereafter, the opportunity arose to purchase the freehold of the land on which the community centre was built and a further loan from the Public Works Loan Board was taken out to fund this. These two loans will not be paid off until 2030 but, in the meantime, the state of the art community and sport facilities are available to all.

Funding to run the hall, pay off the loans and provide all the other Parish Council services comes from the parish precept. This is a figure set by the council and collected by Mid Suffolk District Council as part of the council tax. For this coming year, the Parish Council has set the precept at £50,000 - the same figure as last year. To give a better idea, last year, the precept charge for a band D property was £3.62 per week of which some 95 pence went towards the loan payments. Final figures for council tax and precept payments for next year are made available by MSDC around the end of February.

Update on the Duke's Head

Things are moving frustratingly slowly but here is a summary of what has happened so far and what the next steps might be in the bid to save the Duke's Head. As previously reported, we received really positive feedback from the survey of residents of Coddensham and its outskirts. This enabled us to take the next step - arranging a viewing. However, we were met with our first knock back when the agents told us that the pub was no longer for sale and that they were not in a position to give us access or any further information. This



was extremely disheartening and left us more than a little demotivated.

Just before Christmas, the owner made contact, asking if we would meet to discuss a possible sale. We finally arranged a viewing of the property with the owner; a builder and a local resident with knowledge of commercial property valuations and sales. We also

invited a potentially interested private purchaser from Debenham whose previous attempts to arrange a viewing had also been thwarted.

We found the condition of the property better than we had envisaged but were no further forward as to what price the owners were expecting to achieve. We are now trying to arrange a second viewing with the owner to gain a more accurate idea of renovation work and cost. This will put us in a better position to negotiate a realistic purchase price. Any offer would of course also take into consideration the fact that the property is a commercial building with no business or goodwill and without potential, at least for the foreseeable future, for redevelopment.

Once we are better informed and hopefully able to assess the viability of taking the next step, we would then, depending on the outcome, either: arrange a public meeting to ascertain financial and practical commitment from local residents and/or set up a legally constituted group in order to make a formal offer OR abandon the idea altogether.

Timing is paramount in that once the owners have notified Mid Suffolk District Council of their intention to sell, we have 6 weeks in which to submit an 'expression of interest in bidding'. As an interested group of people, and not a formally constituted Community Interest Group, we would not be able to make this expression therefore the Parish Council has agreed to make this expression on our behalf. This does NOT commit them to following it through – it is merely an 'expression of interest'. We then have the remainder of six months in which to make a formal offer and negotiate purchase with the owners and raise funding. The owners would not be obliged to accept our offer but could not conclude a sale on the open market during this six month period.

“Village community club still thriving after over 50 years”

Coddenham Country Club, a ‘community hub’ run by volunteers, has been awarded grant funding of £2,100 to help renovate the interior of its historic listed building in Coddenham High Street.

The Club is a not-for profit community facility owned by its members and run by them for the benefit of Coddenham and surrounding villages. The Club runs on a completely not-for-profit basis and the day-to-day operations and running and general maintenance of the facility is undertaken by a team of committed volunteers.

Local people have been working hard in their spare time to make long overdue improvements to the building, which has an interesting historical origin. The Club came about following a gesture of Lord De Saumarez of Shrubland Hall who, in 1918, gave the returning war heroes, men of Coddenham, one of his billiard tables. When it was explained that nowhere in the village could accommodate it, he declared that he would provide a building as well! This was a First World War barrack hut, relocated from war-time service on the Shrubland Estate, that housed the Men’s Club at the rear of the Crown Public House until 1960, when the brewery closed the Crown. Huge local protest resulted in the brewery negotiating to sell sufficient outbuildings to facilitate a village club and not opposing a private licence. The former Crown became two dwellings. The Club opened in 1962, with a sizeable mortgage eventually paid off in 1980.

In 1984, the Club Chairman drew up and gained planning permission for an extension



to the original barrack shed, housing the historical billiard table, to provide an intermediate space for a pool table, available for use by young people in the village. The entire property has listed status within Suffolk’s oldest Conservation Area.

Now, with funding support from Suffolk County Councillor Matthew Hicks and grants awarded by two local Trusts, work to replace the club’s flooring has finally been completed.

For further information please contact Donna King, Secretary to the Coddenham Country Club, Tel: 07793 713675 Email: donking2455@yahoo.com;

An email recently received by the Chairman of the Parish Council

Hi Donald

I realise that a few people are trying to wind a lot of other people up within the village and are making the Parish Council their main point of focus. This becomes very disheartening for those on the receiving end, so I wondered if you'd be willing to read this email out at your next meeting please.

As a resident of Coddensham for the past 44 years, I'd like to say "Thank You". The people who in the past, present (and hopefully the future) who have been willing to give up their "free" time to ensure our interests and surroundings are looked after to the best of their capabilities and ensuring future generations will benefit from their actions.

Coddensham has many benefits that people who don't choose to use them simply don't see. We have a recreation field and children's play area that are the envy of other villages, a recycling area, a large Community Hall suitable for all events, a Football Club, Bowls Club, Tennis Club, Badminton Club, Mothers and Toddlers Group, Youth Club, History Club and, of course, the Country Club.

Our Churchyard was the first to receive pocket park status. We also have Broomhill and Mill Hill, plus numerous public footpaths that all have to be maintained. Our Church benefits from a rota of cleaners and flower arrangers along with hosting coffee mornings. We also then benefit from the eloquence of those who contribute to and distribute the 6VN Magazine each month. These are all run voluntarily.

Coddensham then benefits from people who have been willing to invest their own money to provide services within the village. An amazing village shop that doubles as an advice centre, the Day Foundation retirement homes that enable people to enjoy their independence for as long as possible, the Beauty Spot and then the people who provide holiday accommodation for others that wish to enjoy all that we have to offer.

These things don't just happen by accident, they have to be set up, planned, organised and executed. We are fortunate to still have a sense of community in Coddensham from which an, essentially, small band of VOLUNTEERS are willing to go out of their way to ensure the existence of these facilities.

Everyone and anyone who wishes to 'make a change' has the opportunity of doing so by offering their time and services (known as VOLUNTEERING) by joining the Parish Council, the Hall Committee or the PCC. It is all too easy to find fault in what others do, or have done, and complain about it, what's needed are people who back their words with actions. Without that commitment of action, everything else is just hot air and, to my mind, not worth the free time of others!

So thank you, all of you, for being people who choose to take action.

Regards

Rowena Clark

PARKING IN THE VILLAGE (some thoughts from Mitch Lock)



I was looking at all the car spaces at the Community Centre and I thought 'That's a lot'.....!!

For many of us living in Coddendam, parking our car can be one of the biggest bugbears. In fact, parking could be considered as one of the biggest annoyances

.....can't park outside your house?someone leaving far too much space in front and behind their car reducing the amount of parking available?vehicles parked across your drive?parking on the footpath so you can't get through without walking on the road? (mind that HGV!!!!!!!!!!!!!!)?

The closure of the Duke's Head in High Street had produced one, albeit temporary silver lining, allowing half a dozen vehicles sanctuary from knocks and scrapes and insurance claims by getting them off the narrowest HGV route in Suffolk. Unfortunately, this is likely to come to an end in the not too distant future. I have heard that it is a likely to be cordoned off for 'Health and Safety' reasons.

So..... what can we do?

Apart from knocking off from work early to get a space, with a bit of consideration for those arriving home after us we could help by parking closer to cars around us to maybe free up an extra slot.

There is always the option of parking on the Community Centre car park and thus contributing to your New Year's resolution of getting more exercise. Not great when you have shopping or it is chucking down with rain, but a good option if you're concerned about your car getting hit.

Perhaps you know of or have some land that could be turned into a few slots and rented out? Anyone out there with possible solutions, please put them forward to the Parish Council.

In the meantime, remember that any place worth its salt has a parking problem!

MPD TANKS

For all your oil tank needs

Steel and Plastic Tanks
available

Free Estimates
Fully Insured



07708 395889
01449 767820

WHAT DOES CODDENHAM PARISH COUNCIL ACTUALLY DO??

It's a question that crosses residents' minds from time to time. A series of future articles will go into more detail. In the meantime, here is a summary.....

The Parish Council provides, manages and maintains a number of facilities for and services to the local community, including the Community and Sports Hall, the Tennis Courts, the Bowling Green, the Recreation Park, the Allotments, Mill Hill and Broom Hill nature parks, some of the streetlights (others are maintained by the County Council) and a few public footpaths (as an agent for the County Council).

It is also invited to comment on planning applications quite regularly and is often consulted on other matters that affect the village. However, it is important to note that it is not the decision-making body on most, if not all of such matters.

Coddenham Parish Council

Donald Burton (Chairman) Isabel Burgess (Vice-Chair)

Janet Fawdry Julia Keeble Jane Soanes Michael West

Colin Hardy John Keeble Steve Causer Richard Budden Mitch Lock

ALL PARISH COUNCIL MEETINGS ARE OPEN TO THE PUBLIC and there is an opportunity at these meetings to put information to the Council and ask questions. More information about meetings is available on the Parish Council section of the website.

www.coddenham.onesuffolk.net/parishcouncil

Clerk and Responsible Financial Officer: Peter Whitehouse

Contact the Council: Tel: Available soon on the website

Email: parishclerk.coddenham@gmail.com

By post: 4, Moat Farm Close, Ipswich, Suffolk IP4 4AJ

Upcoming meeting dates - TUESDAY March 22nd, THURSDAY May 3rd (Annual General and Ordinary Council meetings) and **TUESDAY June 7th**—all at 7.30 pm in the Village Hall.

Please note that there is no meeting in April because of the Annual Parish Meeting