

# Sizewell C update 2023

## And Deed of Obligation

## Coddenham Parish Council

Michelle Emmerson-Grey - Community Relations Manager

Zoe Botten – Community Relations Manager

Tuesday 25th July 2023

# Agenda

- Meet the READ Team
- Deed of Obligation
- Community Pledges
- Timelines
- Project Update
- Project Tracker

**SIZEWELL C IS A PROPOSED  
NEW NUCLEAR POWER STATION**  
THAT WILL BE BUILT ON THE SUFFOLK COAST

IT WILL  
SUPPLY  
POWER TO **6** MILLION HOMES  
AND GENERATE  
ELECTRICITY FOR 60 YEARS



**SIZEWELL C WILL PROVIDE**  
LOCAL JOBS, TRAINING AND EDUCATION BENEFITS

**SIZEWELL C  
WILL SAVE  
9** MILLION  
TONNES OF CO<sub>2</sub>  
EMISSIONS EVERY  
YEAR OF OPERATION

**SIZEWELL C  
WILL TAKE  
9-12 YEARS TO BUILD**  
**SUPPORT  
900** PERMANENT JOBS



## Community Relations Team



**Paul Lennon – Michelle Emmerson Grey**  
Senior Community Relations Manager for Residents and Land. Paul's team is responsible for engaging with residents and landowners regarding the project, addressing enquiries and/or any concerns they have.

**Richard Knight – Zoe Botten**  
Senior Community Relations Manager for community governance and will engage with Parish Councils and local authorities regarding project updates and the future governance of the Deed of Obligation.

# Effective Relationships



Accountability



Honesty



Listening



Open  
Communication



Trust



Mutual Respect





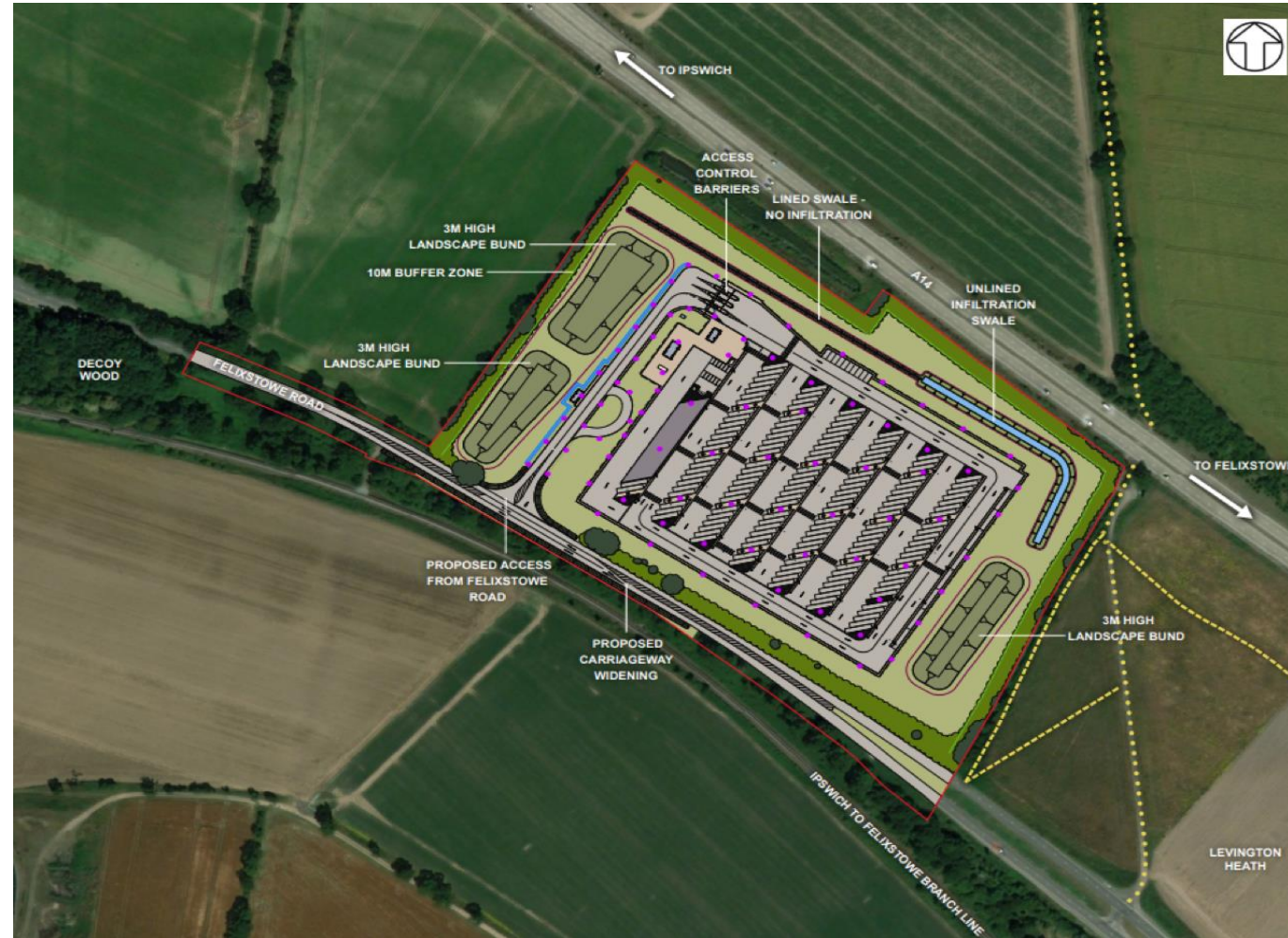
# Freight Management Facility

A12 / A14 junction

Parking for 150 HGVs

Security and inspection of HGVs

Amenity and welfare building





## Traffic Management/Site Access

- Traffic Management Plan (TMP) submitted with the planning application for the proposed water storage facility that sets out the control measures to be used to minimise impacts associated with construction & use of the proposed facility
- Control measures include:
  - HGV caps – construction & operation
  - HGV routing (including site access/egress)
  - Delivery times
  - Emission standards
  - Monitoring (Delivery management Systems)
- 60% of Sizewell C's construction materials will be delivered by rail and sea that will significantly reduce the amount of construction traffic on local roads
- The Freight Management Facility is an important part of SZC's transport strategy secured under the DCO. It will help us carefully schedule HGV deliveries to Sizewell C and also be able to hold HGVs in the event of an incident on the local network



### The Sizewell C Project

Water Sourcing Facility at the Freight Management Site  
Traffic Management Plan

Revision: 2.0

May 2023

# Southern Park and Ride

Located at Wickham Market  
1250 car parking spaces  
Postal Consolidation Centre  
Traffic Incident Management Area





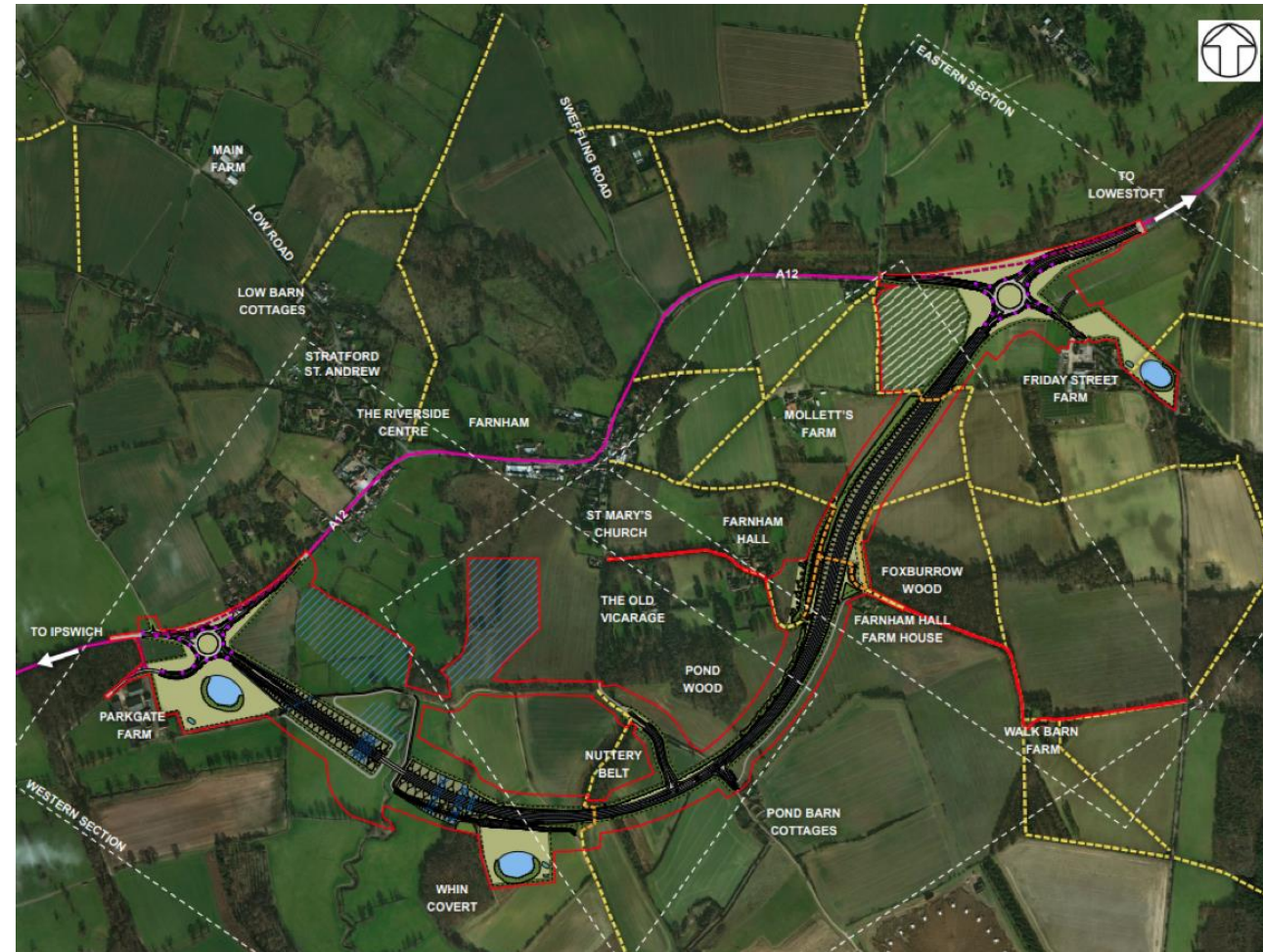
# Two Village Bypass

Bypass of Farnham and Stratford St Andrew

2.4km in length

New 4-arm roundabout at Parkgate

New 4-arm roundabout at Friday Street

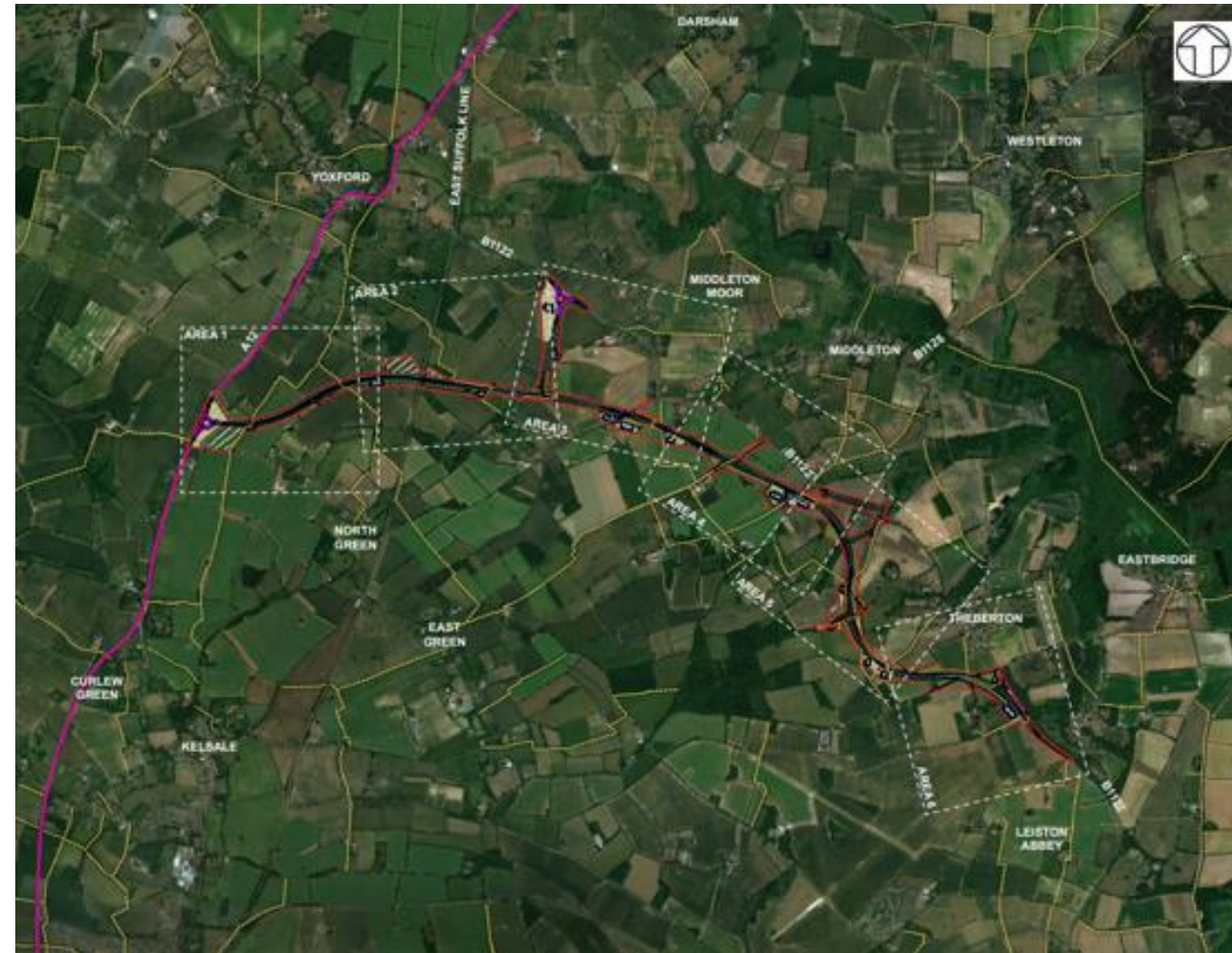


# Sizewell Link Road

SLR is 6.8 km in length running from the A12 south of Yoxford to the main site entrance

The SLR includes a roundabout joining the A12, a single span railway bridge, a link from the SLR to the B1122 called the 'Middleton Moor Link'

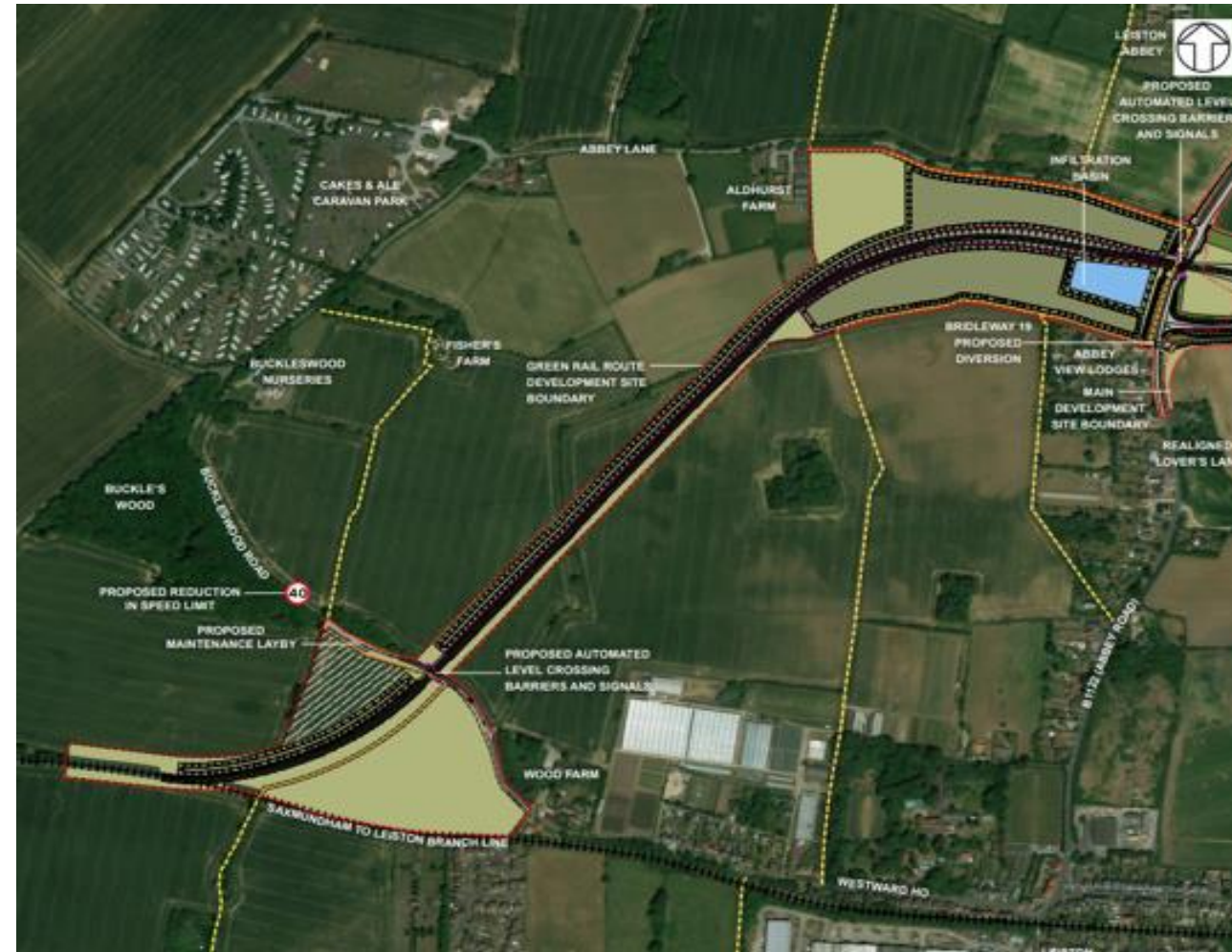
Potential to re-purpose the existing B1122 to be more cycling friendly with links into newly designated 'Quiet Lanes'





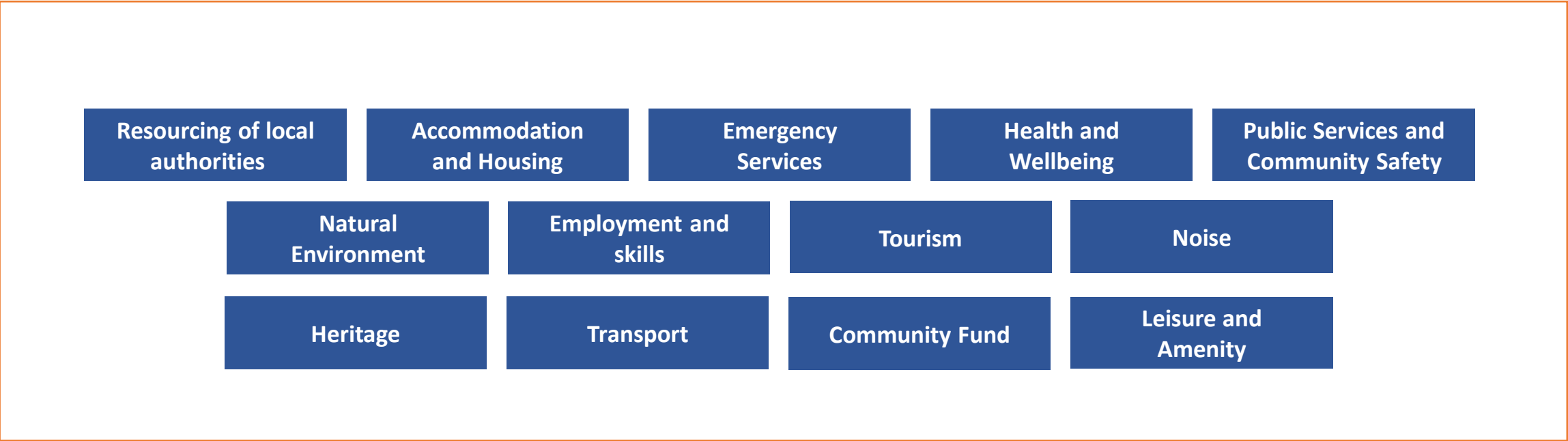
# Green Rail Route

4.5km rail link from the Leiston branch line direct to the construction site



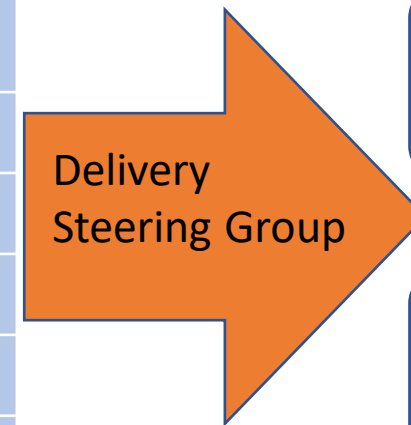


# Deed of Obligation



# Working Groups

Communications	Planning Group
Water Management Working Group	Environment Review Group
Marine Technical Forum	Environment Review Group
Natural Environment Awards Panel	Environment Review Group
Ecology Working Group	Environment Review Group
Rights of Way Working Group	Environment Review Group Transport Review Group
Local Traffic and Transport Working Groups	Transport Review Group
Parish Councils	Transport Review Group
Community Safety Working Group	Social Review Group
Health and Wellbeing Working Group	Social Review Group
Accommodation Working Group	Social Review Group
Tourism Working Group	Economic Review Group
Supply Chain Working Group	Economic Review Group
Employment, Skills & Education Working Group	Economic Review Group



Community  
Forum (Annual)

Main  
Development Site  
Forum

Northern  
Transport Forum

Southern  
Transport Forum

# Community Pledges

Minimize disruption to local communities during the construction of Sizewell C

Invest in local employment, education and skills. This includes an aim to enable 1,500 apprenticeships.

Support the growth of the local economy. This includes measures to support local firms in gaining work on the project.

Transport the majority of construction materials by rail and sea, significantly reducing the number of Sizewell C HGVs on local roads.

Respect the Suffolk Heritage Coast and minimise impact on RSPB Minsmere, National Trust Dunwich Heath and Leiston Abbey.

Return the temporary construction area to a standard befitting the Area of Outstanding Natural Beauty (AONB) following construction.

Remove the accommodation campus and caravan site, the park and ride sites, the rail extension of the Saxmundham to Leiston branch line and freight management facility following construction and restore the land.

Support the Suffolk coast tourism sector to offset impacts from construction through the provision of a Tourism Fund.

Provide a comprehensive 24/7 onsite occupational health service for workers, a healthcare contribution and a Public Services Contingency Fund.

Require all workers to sign a Worker Code of Conduct and enforce it – as we have done successfully at Hinkley Point C.

Enhance the economic, social and environmental wellbeing of local communities through the provision of a Community Fund.

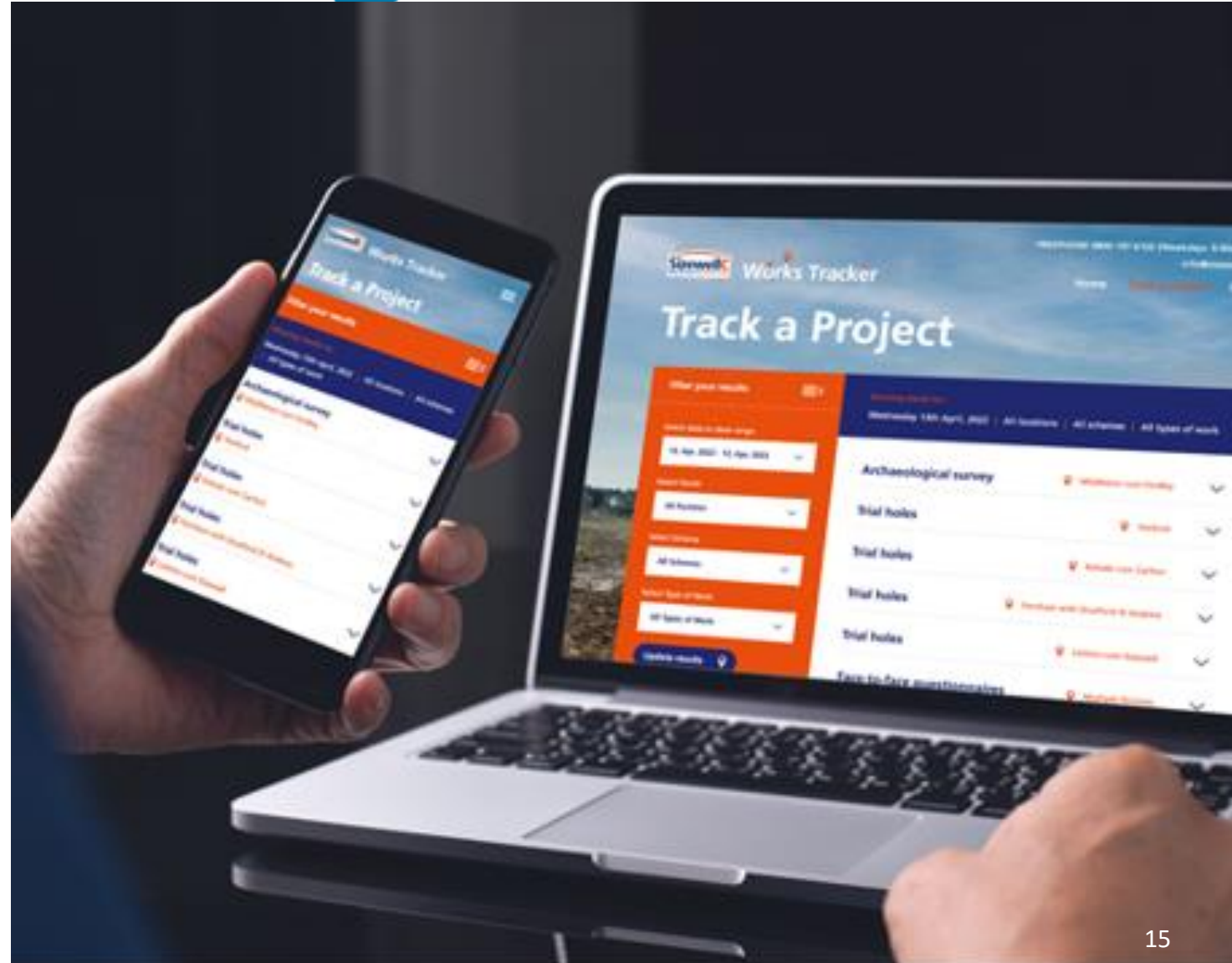
The Sizewell C Project will not impact on the supply of water to local residents by a single drop. We have a sustainable strategy to provide potable water throughout construction and the operation of the new power station.'



# Project updates

New online works tracker to keep local communities informed about surveys and other preparatory works

Contact our Leiston office –  
[info@sizewellc.co.uk](mailto:info@sizewellc.co.uk) or 0800 197 6102





# Thank You